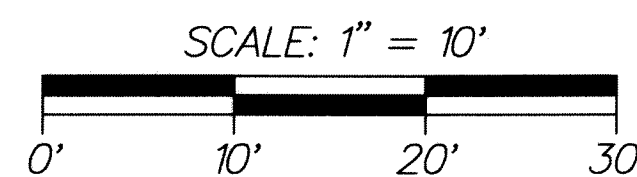


NORTHWEST 6TH AVENUE ESTATES

BEING A REPLAT OF A PORTION OF BLOCK 10, TOWN OF LINTON, ACCORDING TO THE PLAT THEREOF AS RECORDED IN PLAT BOOK 1, PAGE 3 (P.R.P.B.CO.), BEING IN SECTION 17, TOWNSHIP 46 SOUTH, RANGE 43 EAST, CITY OF DELRAY BEACH, PALM BEACH COUNTY, FLORIDA

SHEET 2 OF 2

43



LEGEND:

CL = CENTERLINE

PRM = PERMANENT REFERENCE MONUMENT (4"x4" CONCRETE MONUMENT STAMPED "PRM LBB447") UNLESS STATED OTHERWISE

P.R.P.B.CO. = PUBLIC RECORDS OF PALM BEACH COUNTY

SECTION 17/46/43 = SECTION 17, TOWNSHIP 46 SOUTH, RANGE 43 EAST

O.R.B. = OFFICIAL RECORDS BOOK

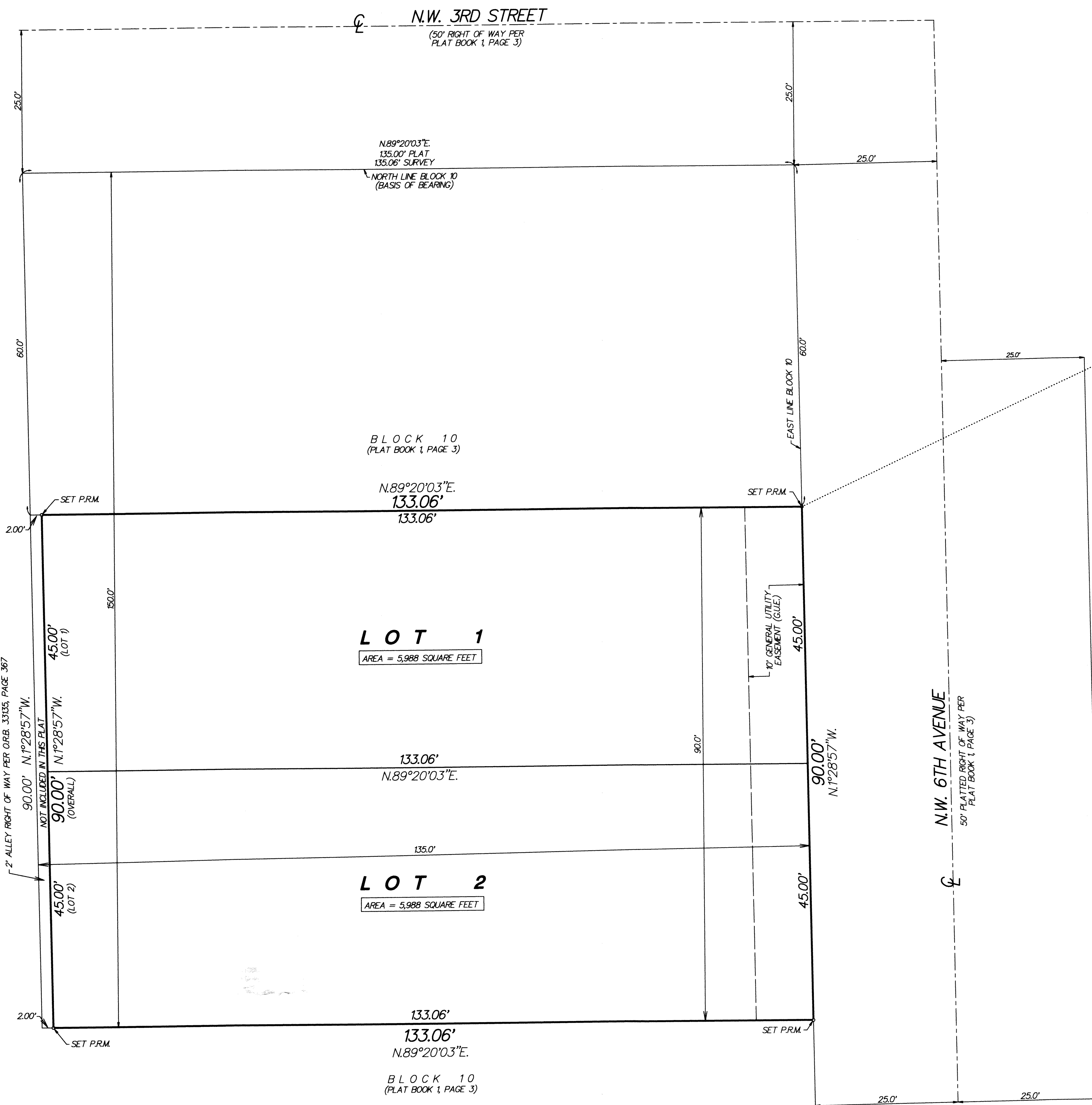
G.U.E. = GENERAL UTILITY EASEMENT

P.L.S. = PROFESSIONAL LAND SURVEYOR

L.B. = LICENSED BUSINESS

BLOCK 10
(PLAT BOOK 1, PAGE 3)

NOTE: NO PLATTED ALLEY EXISTS THROUGH THIS BLOCK
2' ALLEY RIGHT OF WAY PER O.R.B. 33135, PAGE 367



THIS INSTRUMENT WAS PREPARED BY PAUL D. ENGLE, IN THE OFFICE OF ENGLE LAND SURVEYING LLC, 955 N.W. 17TH AVENUE, SUITE K-1, DELRAY BEACH, FLORIDA 33445 (561) 276-4501

NE CORNER OF NE 1/4 OF SECTION 17, TOWNSHIP 46 SOUTH, RANGE 43 EAST (CALCULATED POSITION)

EAST LINE OF THE NE 1/4 OF SECTION 17, TOWNSHIP 46 SOUTH, RANGE 43 EAST

EAST QUARTER CORNER OF NE 1/4 OF SECTION 17, TOWNSHIP 46 SOUTH, RANGE 43 EAST (CALCULATED POSITION)

BLOCK 18
(PLAT BOOK 1, PAGE 3)

LOT 1
AREA = 5,988 SQUARE FEET

LOT 2
AREA = 5,988 SQUARE FEET

BLOCK 10
(PLAT BOOK 1, PAGE 3)